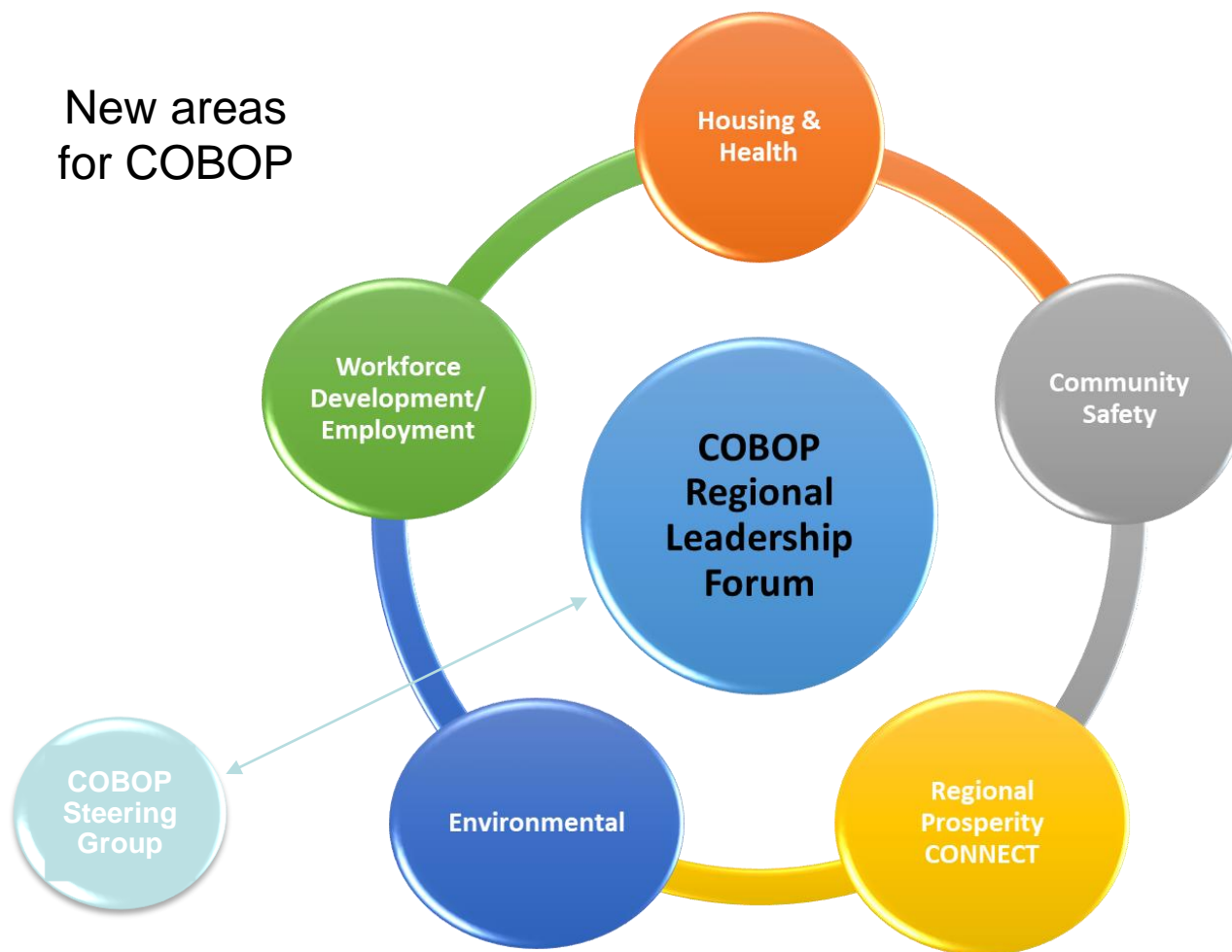




Regional Leadership Forum  
October

# COBOP 2017 snapshot

New areas  
for COBOP



Existing  
structures or  
networks

# Cluster snapshot – October 2017



NEW COBOP CLUSTERS		EXISTING NETWORKS		
Environment Sustainability	Community Safety	Healthy Housing	Workforce Employment	Business and Economic Dev
<p><b>BOPRC, DOC,</b> TPK, TTO, DIA, TCC, WDC, KDC,RLC WBOPDC</p> <p>Working with SBN, BayTrust</p>	<p>NZP, Corrections, DIA, EMBOP,TTO, TWBSC, TCC, WDC, RLC, TDC, MYD, MSD, BOPDHB,</p> <p>Working with SCFNZ and BayTrust</p>	<p><b>TTO, EECA, MSD,</b> BOPDHB, LDHB, TDC, WBOPDC, WDC, RLC, TCC, BOPRC, KDC,</p> <p>Working with BayTrust</p>	<p><b>BOPTI group:</b> SmartGrowth, Toi EDA, RLC, MSD, TEC, MOE, BOPRC, Ngati Tuwharetoa, Mataatua, Te Arawa, Tauranga Moana, Waikato University, PCIT, Te Wānanga O Aotearoa, Toi Oho Mai, Mt Maunganui College, Te Whare Wānanga o Awanuiarangi, Priority One</p>	<p>CONNECT BOP group: MSD, DIA, TCC, TDC, WBOPDC, KDC, KEA, Tourism BOP, Export BOP, NZTA, NZT&amp;E, MBIE, MPI, Toi EDA, Chambers: TGA, RTRA, <b>EBOP</b>, TMBA, TOI OHO MAI, TWWA, <b>P1</b> Venture Centre, SBN, SmartGrowth, Rotorua NZ, <b>COBOP, BOC...</b></p>
<p><i>Focus: leadership/best practice in sustainability as agencies, enabling community/care groups, emerging issues such as climate change</i></p>	<p><i>Focus: agency coordination, enabling community/social resilience</i></p>	<p><i>Focus: sustainable funding for Healthy Homes initiatives, efficiencies in projects, best practice</i></p>	<p><i>Focus: valid training opportunities and career pathways, access to key sector jobs, transferable skills and career development, Māori youth population</i></p>	<p><i>Focus: regional business prosperity, development, growth and promotion</i></p>
Collaboration cycle phase (see Power of Co Model)				
Early 3	2	3 and 4	3 and 4	1 and 2

## Power of Co – Twyfords Model of Collaboration

