

# Opotiki Harbour






## The Opotiki Harbour Transformation Project

The key step to a brighter future

38°00'00"S 177°30'00"E - Opotiki

# The Vision

## Economic and social independence:

-  Horticulture especially Kiwifruit at Te Kaha
-  The Motu Trails Cycle Way
-  Opotiki's Aquaculture Project

# Aquaculture/Harbour Projects

Two Organisations  
Two Projects  
One plan

# Why Aquaculture

- Potential to transform the Eastern Bay
- Marine environment provides opportunity
- Environmental Sustainability is proven
- Demand is there
- Brings employment in support industries
- Water space is locally controlled

# \$7M collectively so far

- BOPRC – science, modelling, planning, Strategy, Regional Aq Organisation
- ODC – research, consents, infrastructure
- Whakatōhea – research, consents, trials
- Bay Polytech – research, facilities
- Central Govt – NZTE, MED, MFE

# Opotiki District Council Harbour Entrance

- 200 submissions support/no appeal
- Communitrak survey of 89% of community say “very important”
- 77% willing to pay
- Fully Consented
- Updated business case(s) now finalised
- Part funding needed

# LTP

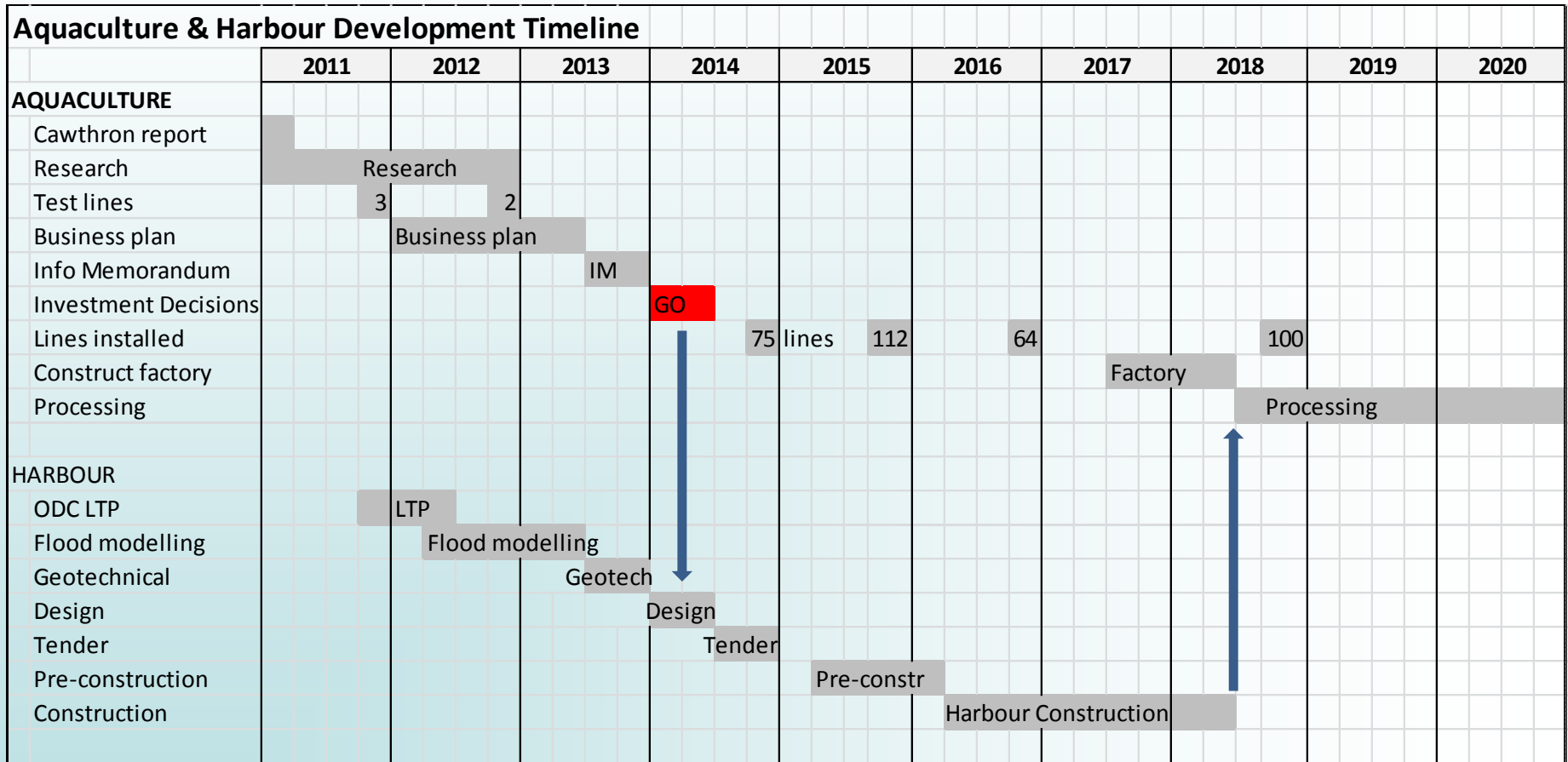
- The Ōpōtiki District Council is planning for:
  - Harbour Development
  - Aquaculture
  - Detailed project plan developed
- It will feature in ODC's 2012-2022 Long Term Plan
  - Auditors - May have qualification around funding
- 2014 key date
- Growth leads to need for infrastructure -  
Sewerage, Water, Electricity.....
- Industrial and residential zoning

# Harbour Investment: Sources & Rationale

Source	Rationale
ODC Loan / + Private	Income from commercial charges Increased employment/expanded ratepayer base Other associated marine activities
BOP Infrastructure Fund	Regional benefits – increased GDP Social, cultural, environmental benefits Deliver aquaculture strategy
Govt Grant / Suspensory loan	Social benefits – reduced social spend Economic benefits – increased GDP



# Harbour development



# Financing / Servicing

Construction cost                      \$37M +/- 30%  
+ Dredging as needed

Source	Contribution
ODC Loan / Private investment	Commercial charges, less maintenance and dredging, will support \$10 to 12M debt / investment, ie approx 30%
Regional (Infrastructure Fund) / National	Grant, or Suspensory loan 70%

# Employment Projections

(Corydon-Sapere Feb 2012)

Summary of FTEs - year 12	Total FTEs - mid-low	Total FTEs - mid-high	capacity
Bale store, processing and warehouse	124.7	196.7	235.3
Associated businesses and flow-on effects (Indirect and induced FTEs)	66.9	98.6	109.4
Vessels	24.0	31.0	37.0
Factory cleaning	13.0	21.3	25.3
Hatchery	8.0	8.0	8.0
Commercial managers and administration	8.0	8.0	8.0
Factory engineering	7.3	7.3	7.3
On-water farm managers	2.0	2.0	2.0
Property and waterspace investment	1.8	1.8	1.8
Charter fishing or eco-tourism	1.5	14.5	14.5
<b>Total FTEs created, year 12</b>	<b>257.2</b>	<b>389.3</b>	<b>448.7</b>

# Other Social Benefits

- Reduced welfare reliance
- Reduction in crime
- Increased population
- Revitalisation of iwi
- Access to coastal area
- Increased community wellbeing

- Fundamental to this project is support from:
  - Community
  - Regional Council
  - Central Government
- Need visible indications of support eg RLTP
- BOPRC Infrastructure Fund commitment
- Joined up approach to Wellington
- Any other thoughts?



# Thank You







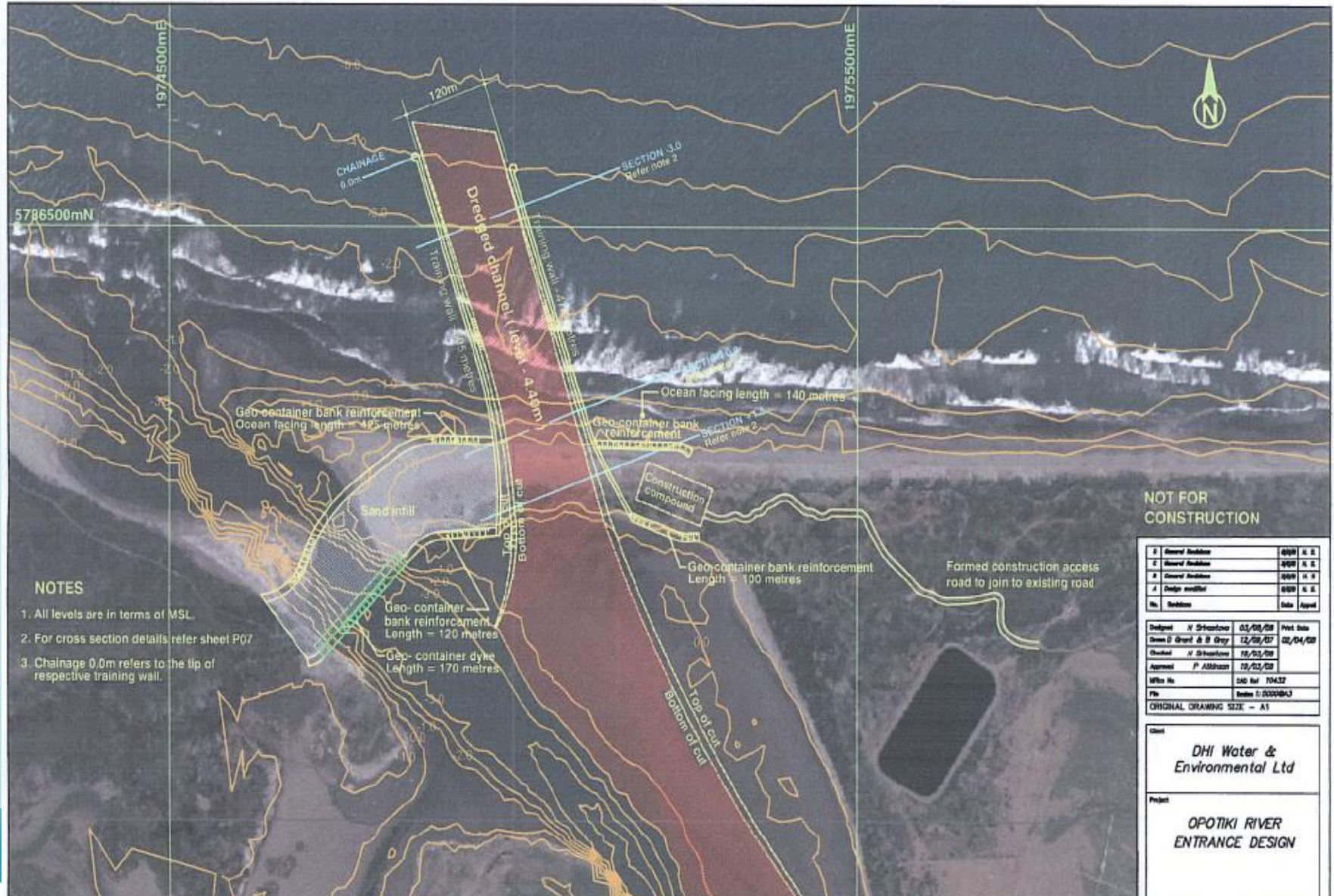








# The Opotiki Harbour development





# Will it work without harbour?

Yes but with reduced profitability, conflict of use in Whakatāne harbour and town including heavy vehicles through the Strand, and with the loss of the economic and social outcomes in Ōpōtiki.

