

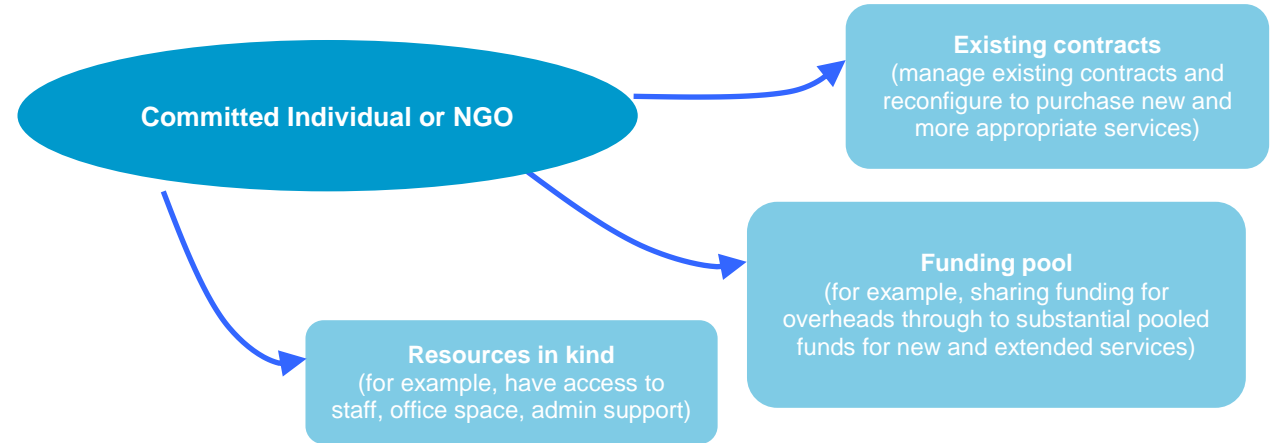
Social Sector Trial model

What it does

- Currently being trialled in sixteen locations
- Tests in each location:
 - locally led and implemented changes
 - pooling funding and transferring control of resources
 - single accountability for delivering results
 - involvement with local stakeholders and networks in governance.

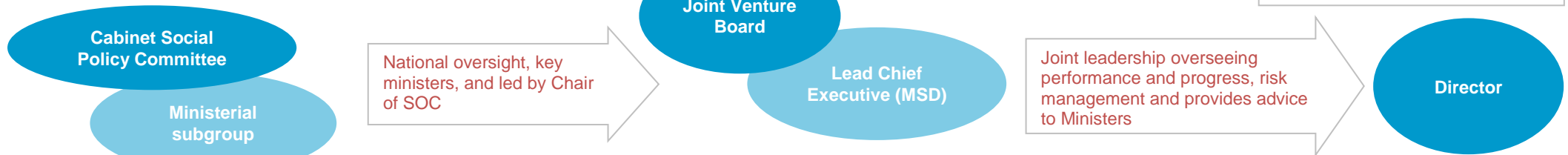
How it works

- A contracted NGO or an employed individual:
 - leads a programme of work (plan) using cross-agency resources
 - manages development, implementation and reporting results of location work plan, manages local contracts and engagement with services and government agencies, and identifies any emerging issues
 - influences social services outside of direct control, and
 - implements new processes to suit community needs.



Accountability arrangements

National (overseeing all sixteen Trials)



Location (responsive to local conditions)

- Local leaders oversee direction and priority setting, engage community ownership and involvement.
- Includes local authorities, government agencies, iwi, NGOs, service providers.

