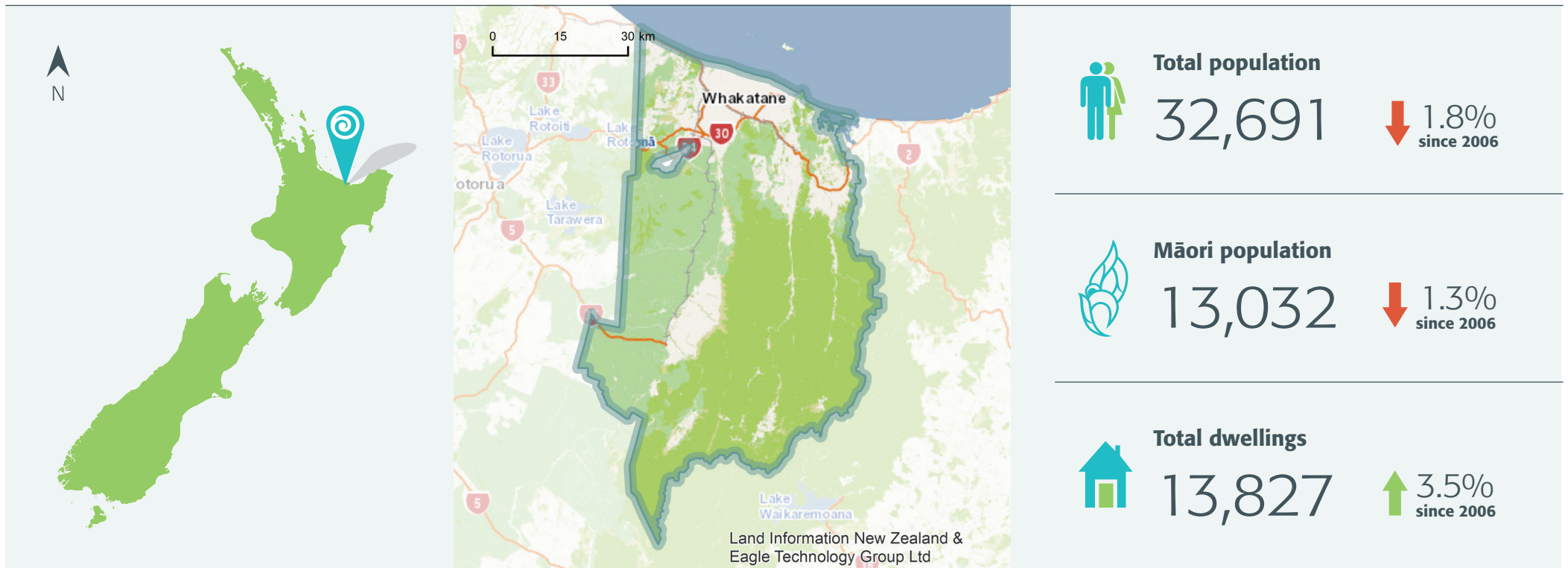
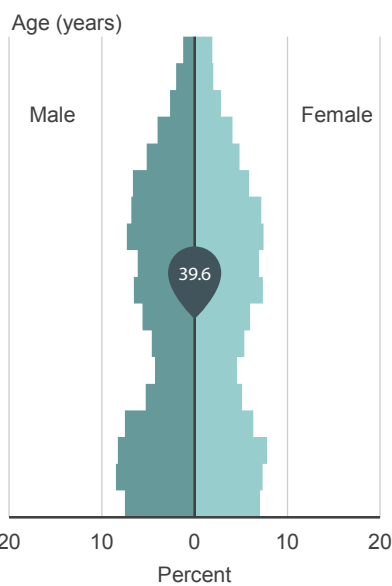


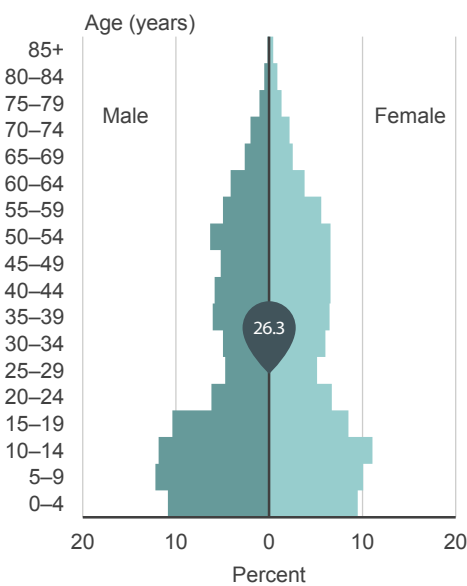
# QuickStats about Whakatane District



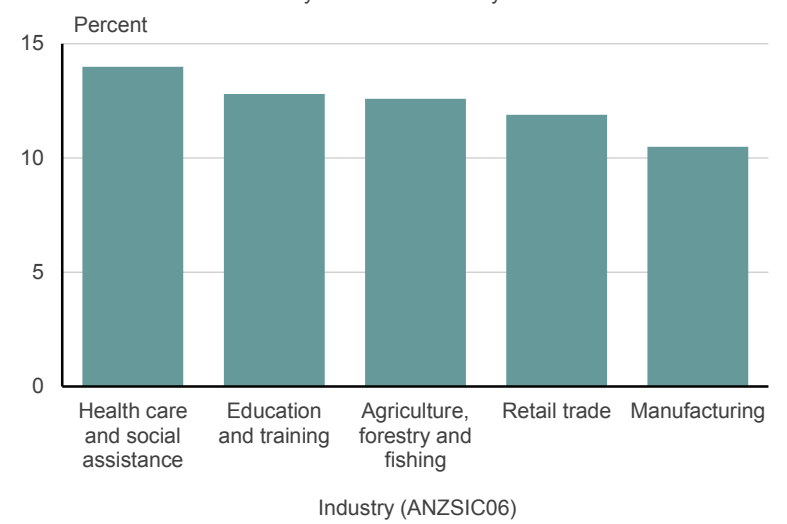
**Age and sex of people**  
Whakatane District  
2013 Census



**Age and sex of Māori**  
Whakatane District  
2013 Census



**Top five industries in Whakatane District**  
By employee count  
For year ended February 2013



## How Whakatane District compares with the national average

### Individuals

#### Major ethnic groups

	European	66.3%	vs	74.0%
	Māori	43.5%	vs	14.9%
	Pacific peoples	2.5%	vs	7.4%
	Asian	2.4%	vs	11.8%
	Middle Eastern/ Latin American/ African	0.2%	vs	1.2%
	Other	1.8%	vs	1.7%

#### Percent born overseas

12.0% vs 25.2%

#### Percent of people with a formal qualification\*

72.6% vs 79.1%

#### Median income\*

\$25,600 vs \$28,500

\*For people aged 15 years and over.

### Households

#### Percent of households that own their dwelling\*

63.1% vs 64.8%

#### Median weekly rent

\$220 vs \$280

#### Percent of households with internet access

67.1% vs 76.8%

\*Or hold it in a family trust.